

Outbound Program

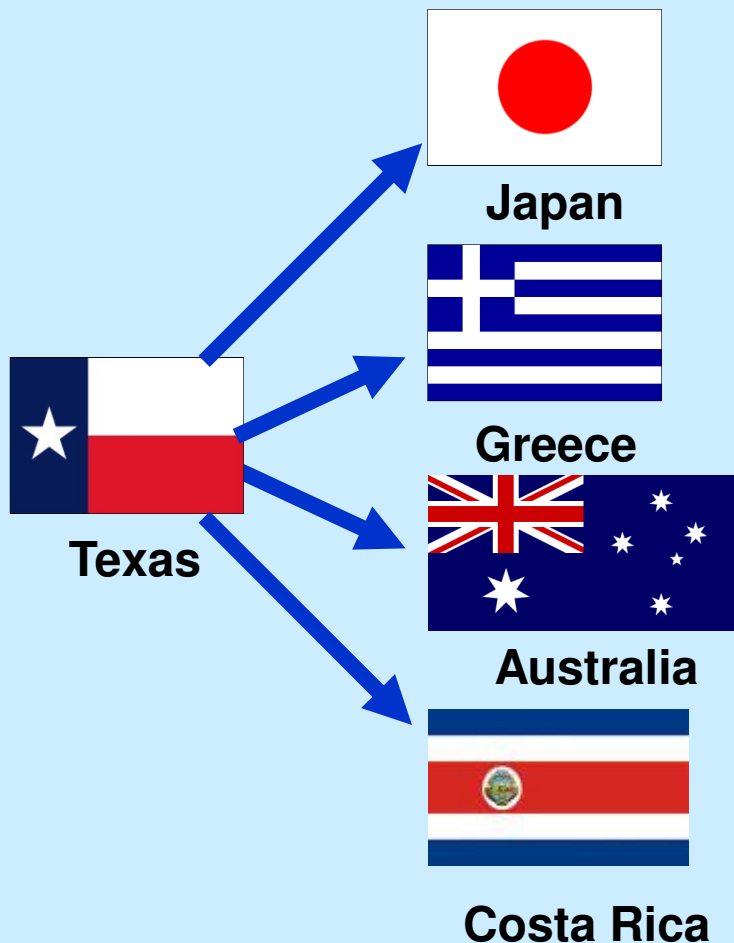
Travel to another country !

Japan, Greece, Australia, or Costa Rica ...
and stay with a host family !

- **Requirements**
Application, references, and screening interview
- **Expectations**
Be an **ambassador** of the USA !
- **Schedule**
Application deadline; tentative dates for home-stay
- **Cost**
Program cost covers orientation, airfare, food & lodging, insurance, & chaperone

Outbound Opportunities:

Live in Another Country



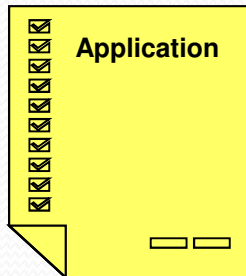
Spend 2-4 weeks with a host family

- Delegates, ages 14-18
- Chaperones
- Optional 3-week Japanese language study prior to home-stay !

*The world is shrinking at a dramatic rate...
Enable your family for the future !*

What are the Requirements for a youth to be an Ambassador in another country?

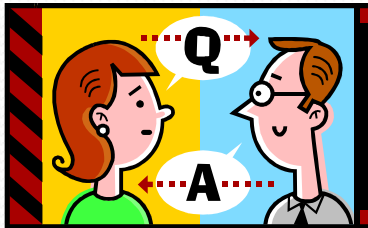
Complete the Application !



- Provide 2 references
- Include non-refundable \$100 application fee
- Parents and youth sign a “participation agreement”

Note: Returning the application does not obligate your family in any way (nor does it assure acceptance as a delegate)

Participate in an Interview



- Screening process checks to see if youth is ready to be a delegate:

If selected, will this youth be a good representative of his/her family and the USA ?

Is this youth mature enough to live in another culture for one month ?

- Allows potential delegate & parents to ask questions
- Information from the application and interview is also used to match selected delegates to host families



What are the Expectations for the delegates who are selected?

Before the Trip: *Prepare!*

Learn about the Country & Culture

- Read & Study about the Country and Culture
 - Review the provided TGE Materials
 - Explore the Internet
 - Check out the Library
- Learn about what to expect on the Adventure !
 - Attend Orientation
 - Communicate with coordinator, chaperone, other delegates, and host
- Prepare to meet your Host Family
 - Create a Photo Album of your life in Texas !
 - Identify some gifts for your host family & new friends
 - Learn a few key phrases in the local language



What are the Expectations for the delegates who are selected?

During the Home–Stay: *Have FUN & Learn !*
Become a part of the Family

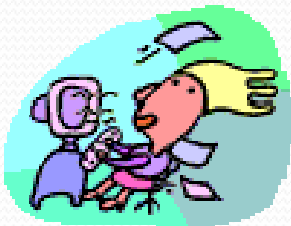
- **Represent the United States**
 - You are an **ambassador** for the USA
 - The host family and others you meet will make value judgments about American teens based on your actions
- **Participate in family activities**
 - Explore: Try local foods, play regional games, see local sights, take part in local festivals
 - Be a responsible family member: help with family chores, keep your living area clean
- **Record your Adventure**
 - Keep a daily journal
 - Take lots of pictures & videos
- **Make every day count !**
 - Communicate both verbally and non–verbally with your host brother or sister and their family
 - **Be Flexible !** Have patience and a positive attitude



What are the Expectations for the delegates who are selected?

After you return: *Share your Excitement !*
Tell others about your Adventure

- **Complete a Summary report for TGE**
 - How would you describe your overall experience?
 - What was your impression of Japan, Greece, Australia, or Costa Rica?
 - What did you learn?
 - How did the exchange make a difference to you?
 - What did you learn about yourself?
 - What are your specific suggestions for youth who are future delegates?
- **Update the individuals who helped finance the trip**
 - Thank them for the once-in-a-lifetime opportunity
 - Tell them about your adventure
- **Create ways to share your Adventure !**
 - Develop a presentation to church and civic groups
 - Update “Facebook” or “My Space”
 - Write a magazine article, newsletter, or book
 - Make a scrapbook



What's the "Participant Agreement" ?

- Pledge signed by Delegate & Parent
 - Commit to expectations
 - Acknowledge that misconduct may result in being sent home at personal expense
- Commitment Includes:
 - Following schedules
 - Showing respect
 - Dressing appropriately
 - Refraining from profane, obscene language
 - Refraining from accepting, carrying, or using alcohol, tobacco, or illegal drugs

Commitment
I agree...
I understand...

Reminder: The delegate's behavior reflects his/her family, home, community and country.



How much does it *Cost*?



- **Cost** (subject to change if airfare increases)
 - Japan: \$3,300
 - Greece: \$3,300
 - Australia: \$3,600
 - Costa Rica: \$1,800
- **\$100 Scholarships** will be given to delegates who have hosted in the past through TGE program
- ***Cost Includes:***
 - International round-trip airfare from Dallas to host country including departure tax
 - All transportation and meal costs within host country
 - Home-stay with a family
 - Adult chaperone for the entire trip
 - International Traveler's Insurance Coverage
 - A short stay at a Japanese summer camp with the host friend (LABO program only)
 - Orientation program and materials
 - Program t-shirt
- ***Cost does not include Passport fees or personal spending money.***



How can I raise the *Money*?

- **Fundraise !** *Suggestions include:*
 - In exchange for a donation, perform odd jobs for extended family, neighbors and friends.
 - Contact local civic organizations and businesses. In exchange for a donation, commit to presenting a program about your experience upon return.
 - Ask a youth organization that you are an active member of to make a contribution.
 - Organize a fundraiser, bake sale, car wash, garage sale and the like, with other TGE delegates or another club. Split the profits with the participating youth.
 - Contact local businesses and ask what fundraising opportunities they may have available.
 - Send a fundraising letter to family members and friends. Samples can be found on the website.
 - Sign up and use web tools like Good Search, or enroll in a Scrip program.
 - Ideas are endless! Be Creative & Persistent.
 - *TGE would be happy to assist the group in organizing fundraising efforts.*
- **REMEMBER your Supporters !** *Suggestions include:*
 - Thank you Letter
 - Post card from your trip
 - Mention them in any articles you write, or presentations you give



What are the Key Dates for 2011 ?



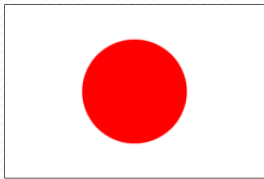
Date	Activity	Comments
NOW	Save money & study culture	
March 1, 2011	Submit Application: References, participation agreement and \$100 non-refundable application fee to Outbound Coordinator	Linda Smittle 798 Highland Court Allen, TX 75002 tge.linda@gmail.com (972) 562-7356
March	Complete screening interview	TGE staff will schedule
April 15	Initial payment due (50%)	Send to Outbound Coordinator
April - June	Match delegates to host families	Sponsors' staff - based on age, gender and interests of youth
June 1	Final payment due	\$1400 or \$1700 or \$900
June	Receive travel info	Host family & flight info
May / June	Attend orientation	Meet other delegates; complete preparation homework
Summer 2011 *	Represent USA ! Live with a family abroad !	Have FUN ! Share Culture !

* Specific dates are on next page (based on country)

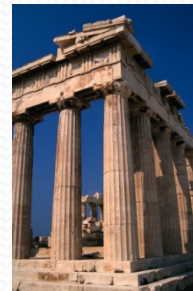


What are the Exchange Dates ?

Japan July 7 – August 5



Greece July 1 – July 24



Australia July 23 – August 8



Costa Rica July 2 – July 24



Dates may change slightly based on Flight Availability



Additional Information

- Sponsors:
 - Texas Global Education and Cultural Exchange
 - Japan Partners:
 - Labo International Exchange
 - LEX / Hippo Family Club
 - Greece Partner: American Farm School
 - Australia Partner: International Student Exchange Australia
 - Costa Rica Partner: LEX / Hippo Family Club
- Contact Information

Texas Global Education and Cultural Exchange

- Founded in 2005
- 501 C (3) Non-Profit Organization
 - Board of Directors
 - Donations are Tax Deductible
 - Powered by volunteers
- Mission: *Texas Global Education & Cultural Exchange was created to support and perpetuate the growth of global education and promote world peace through cultural exchange opportunities for mutual understanding and to establish a network to further international understanding.*
- [Texas Global Education URL](http://www.TexasGlobalEducation.org) (www.TexasGlobalEducation.org)



Labo International Exchange (Japan)

- Started in 1966 (Japanese Teaching Information Center)
- Goal: *Create an awakening of international understanding and awareness among Japanese children through language*
- Japanese volunteers provide English language experiences and activities in their homes
- Home-Stay program initiated in 1972 with 4-H Clubs of America
- Scope: 3,000-Adult Volunteers & 60,000-Children
- [Labo URL](http://www.labo-exchange.com) www.labo-exchange.com



LEX / Hippo Family Club (Japan & Costa Rica)

- Three integrated Portions:
 - Network of community-based clubs where parents and children gather and learn languages, songs and games from other cultures
 - Exchange program through which LEX families host visitors from over 100 countries & travel to other countries for home-stays
 - College where LEX members conduct research and write books on language, physics, and other related subjects
- Started in 1981 (4H)
 - Currently 30,000 members (Japan, Korea, Mexico, United States)
 - Focus on variety of languages - 19 Different !
- [LEX/Hippo Family Club URL](http://www.lexlrf.org) www.lexlrf.org



American Farm School (Greece)

- Located in Thessaloniki, Greece
- Private, nonprofit educational institution founded in 1904 to serve rural population of Greece and Balkans
- Major Divisions:
 - Secondary School
 - Dimitris Perrotis College of Agricultural Studies
 - *Department of Lifelong Learning*
 - *Cultural exchange program for U.S. and international high school students known as Greek Summer*
- [American Farm School URL](http://www.afs.edu.gr) www.afs.edu.gr



International Student Exchange Australia

- **Mission:** OUR AIM IS TO ENSURE THAT
 - *Each participant's stay is a rewarding and memorable experience.*
 - *The relationships created and developed between visitors and families will advance the vision of "Universal Peace".*
 - *Our association with Agents and Service Providers will be mutually beneficial.*
 - *Our staff-working environment is an enjoyable, rewarding and team orientated experience.*
- **Privately owned company formed in 1992**
 - Cultural interaction
 - personal relationships
 - better understanding
 - "universal peace"
- **ISEA URL:** www.i-s-e.com.au



How can I get more *Information* ?

Web site: www.TexasGlobalEducation.org

Inbound Coordinator: *Susan Kilpatrick*

tge.susan@gmail.com

(940) 241-3097

Outbound Coordinator: *Linda Smittle*

tge.linda@gmail.com

(972) 562-7356

Executive Director: *Dan James*

djworld04@sbcglobal.net

(214) 766-6323

